

How Boomi Enables Practical AI

The Boomi Enterprise Platform helps organizations use intelligence models and AI agents to create value-driven outcomes.

Here are five ways Boomi can help your business become AI-ready – today.



1

System Interoperability

Boomi connects any application, data source, device, and AI system of intelligence – whether in the cloud, on-premises, or at the edge – ensuring complete connectivity throughout your IT landscape.



2

Data Management

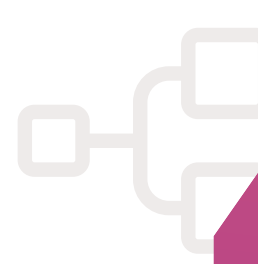
Boomi harmonizes large, complex data sets from any format so clean, trustworthy, up-to-date information can fuel your AI models.



3

RAG Pipelines

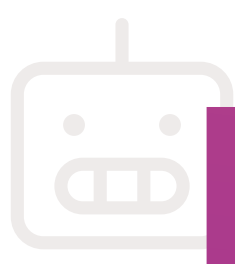
Boomi orchestrates retrieval-augmented generation (RAG) processes to infuse publicly available intelligence models with your organization's contextualized data for more precise, accurate decision-making.



4

API Management

Boomi allows you to manage all of your application programming interfaces (APIs), which is critical in the age of AI because that's how AI agents communicate.



5

Agent Management

Boomi provides a suite of embedded platform agents and also enables you to monitor all of your organization's agents so you know how many there are, where they operate, what they do, and if they meet compliance requirements.

Learn more about how Boomi can help you achieve your AI ambitions at boomi.com/platform/ai/

